

store design

branding

visual merchandising

hotels & restaurants

exhibit design

furniture

lighting

materials

eco

fashion & design

[about us](#) | [home](#) | [advertise](#) |

● Casa Mathilda by Espacio en Blanco, Barcelona – Spain

September 15th, 2016 by retail design blog



Casa Mathilda is one of the recent projects by Espacio en Blanco, an interior design firm led by Barbara Aurell. Located in the Eixample district of Barcelona, Casa Mathilda is located on the main floor of a building of the early twentieth century.

**ESPACIO
EN BLANCO**

ESTUDIO CREATIVO DE INTERIORISMO,
ARQUITECTURA Y DISEÑO DE INTERIORES
PARA ESPACIOS RESIDENCIALES
Y COMERCIALES

Blog Retail Design

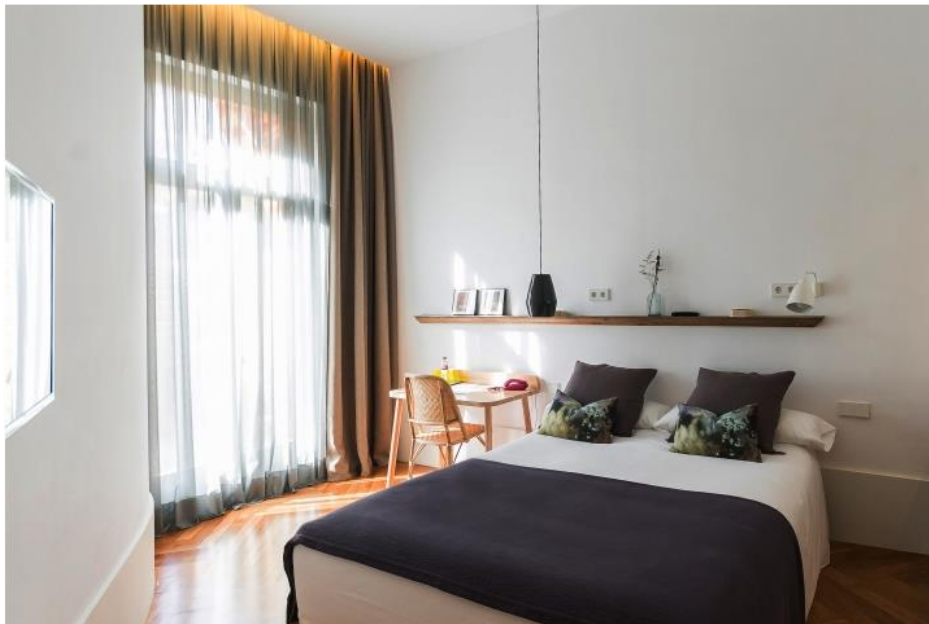
16-09-15

<https://goo.gl/CvBfU2>

Comunikare



It is a project designed with care to make guests feel at home, where it has avoided ostentatiousness, opting towards rationality and personality of the space itself. With this project, Barbara Aurell has carried out a thorough job of recovering the original features of the property. From brass doorknobs to the oak floors, which have been combined with existing hydraulic tiles, she has created an environment with personality.



Aurell has also laid out the space with the original towering stained glass doors, giving them the function of sliding doors in the common areas Casa Mathilda. Also, some of the original moldings ceilings have been converted into mirror frames and shelves, which, along with vintage style furniture create an environment with great personality.

ESPACIO EN BLANCO

ESTUDIO CREATIVO DE INTERIORISMO,
ARQUITECTURA Y DISEÑO DE INTERIORES
PARA ESPACIOS RESIDENCIALES
Y COMERCIALES

Blog Retail Design

16-09-15

<https://goo.gl/CvBfU2>

Comunikare



The Casa Mathilda transmits comfort and tranquility to its guests in the relaxed environment of the space. The pastel shades of hydraulic tiles, the soft tones of fabrics and curtains, and soft green color used on walls, help create harmony. "If I had to define this hotel would as a space created by people for people," says Barbara Aurell. "I wanted to escape creating a cold and impersonal accommodation for our guests. Thanks to the distribution of spaces and to the philosophy of its owner, guests can feel at home, moving freely in the kitchen and common spaces and even organize their own dinners," adds the interior designer.



ESPACIO EN BLANCO

ESTUDIO CREATIVO DE INTERIORISMO,
ARQUITECTURA Y DISEÑO DE INTERIORES
PARA ESPACIOS RESIDENCIALES
Y COMERCIALES

Blog Retail Design

16-09-15

<https://goo.gl/CvBfU2>

Comunikare

Casa Mathilda has 14 rooms, all with natural light from the large windows made possible on the property. Some of the rooms also have direct access to the terrace, the jewel of Casa Mathilda, which overlooks an interior patio, an oasis that allows escape from the bustle of the city. This accommodation has 4 bedrooms with a chill out area suitable for families. Assumpta Baldó, the owner, prepares delicious breakfasts, with homemade cakes, natural juices, seasonal fruits and different types of breads.



ESPACIO EN BLANCO

ESTUDIO CREATIVO DE INTERIORISMO,
ARQUITECTURA Y DISEÑO DE INTERIORES
PARA ESPACIOS RESIDENCIALES
Y COMERCIALES

Blog Retail Design

16-09-15

<https://goo.gl/CvBfU2>

Comunikare